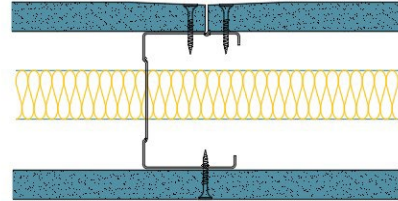


## AS70-K-154(25) - SPEEDLINE System Data Sheet - Version V1 (24-10-23)

SPEEDLINE 70mm Acoustic 'C' Stud Partition  
 @600mm Ctrs, with Knauf 15mm Soundshield Plus  
 each side, 25mm APR



### System Performance Breakdown

Fire Resistance:

BS476 Part 22:1987:

Test Ref & Date or Applied Ref & Report:

Max Height:

Thickness:

Duty Grade: BS 5234: Part 2:1992:

Sound Insulation:

**60/60 Minutes** (Integrity/Insulation).

**BRE 285458 - BRE Report P102396-1011B**

**Refer to Speedline Specification Clause**

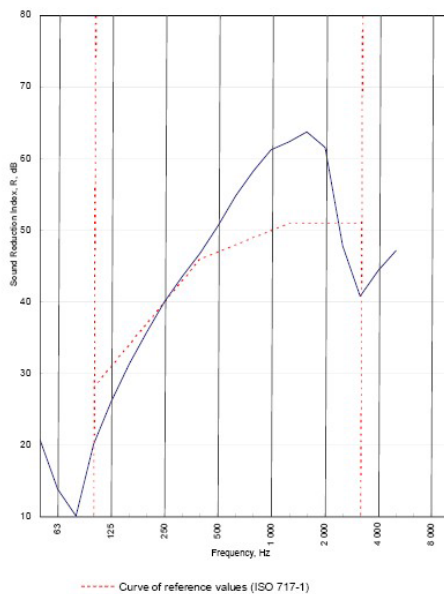
**102 mm.** (At Base Track, Excluding Finishes)

**Severe - Annexes A-F**

**47  $R_w$ dB**, Date Tested or Assessed Against - 70-K-53(25)


Test Code:  
H17426AA  
Test Date:  
27/06/2011


Freq. Hz	R dB
50	20.7
63	13.8
80	10.1
100	20.1
125	26.0
160	31.3
200	35.8
250	40.0
315	43.6
400	46.8
500	50.6
630	54.9
800	58.3
1 000	61.3
1 250	62.4
1 600	63.8
2 000	61.6
2 500	47.8
3 150	40.8
4 000	44.4
5 000	47.1
6 300	
8 000	
10 000	





Rating according to BS EN ISO 717-1:1997	<b><math>R_w</math> (C;Ctr) = 47 (-3;-9) dB</b>		
Evaluation based on laboratory measurement results obtained by an engineering method:	$C_{50-3150}$ = -7 dB	$C_{50-500}$ = -6 dB	$C_{100-500}$ = -3 dB
	$C_{y,50-3150}$ = -18 dB	$C_{y,50-500}$ = -18 dB	$C_{y,100-500}$ = -9 dB

TESTED AT ONE OF THE UKAS ACCREDITED LABORATORIES BELOW

B.T.C (H-Ref on Graph) 

B.R.E 

AIRO 

S.R.L 

Customer: Metsec plc Hepsec Division

BTC 17426A: Page 9 of 11



SPEEDLINE Drywall Systems, Adsetts House, 16 Europa View, Sheffield Business Park, Sheffield, S9 1XH.

Tel: 0114 231 8030.

Email: [enquiries@speedlinedrywall.co.uk](mailto:enquiries@speedlinedrywall.co.uk)

(As per the requirements set out in ISO/IEC 17025:2017 regarding test data the results stated have been carried out by voestalpine Metsec plc as part of the contract to supply Speedline Metal Sections to SIG Plc)